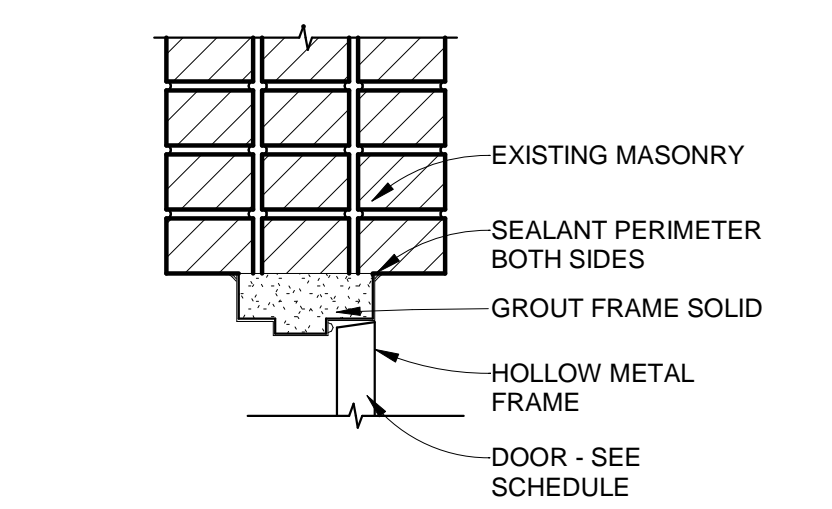
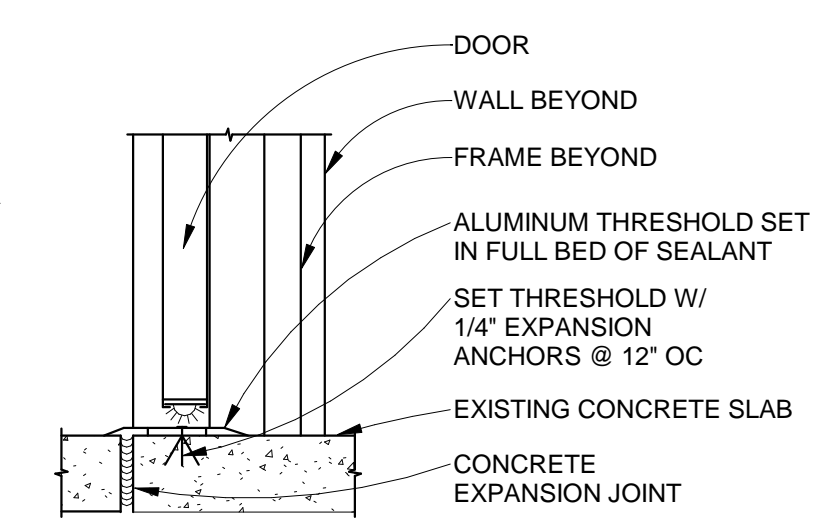


1 FIRST FLOOR PLAN
1/4" = 1'-0"

General Premise, 312 sq (stock room, 132 Ft sq., office, 99 Ft sq., employee restroom 43 Ft sq., janitorial room 38 ft sq.)
Bonded Premise, 959 ft sq.



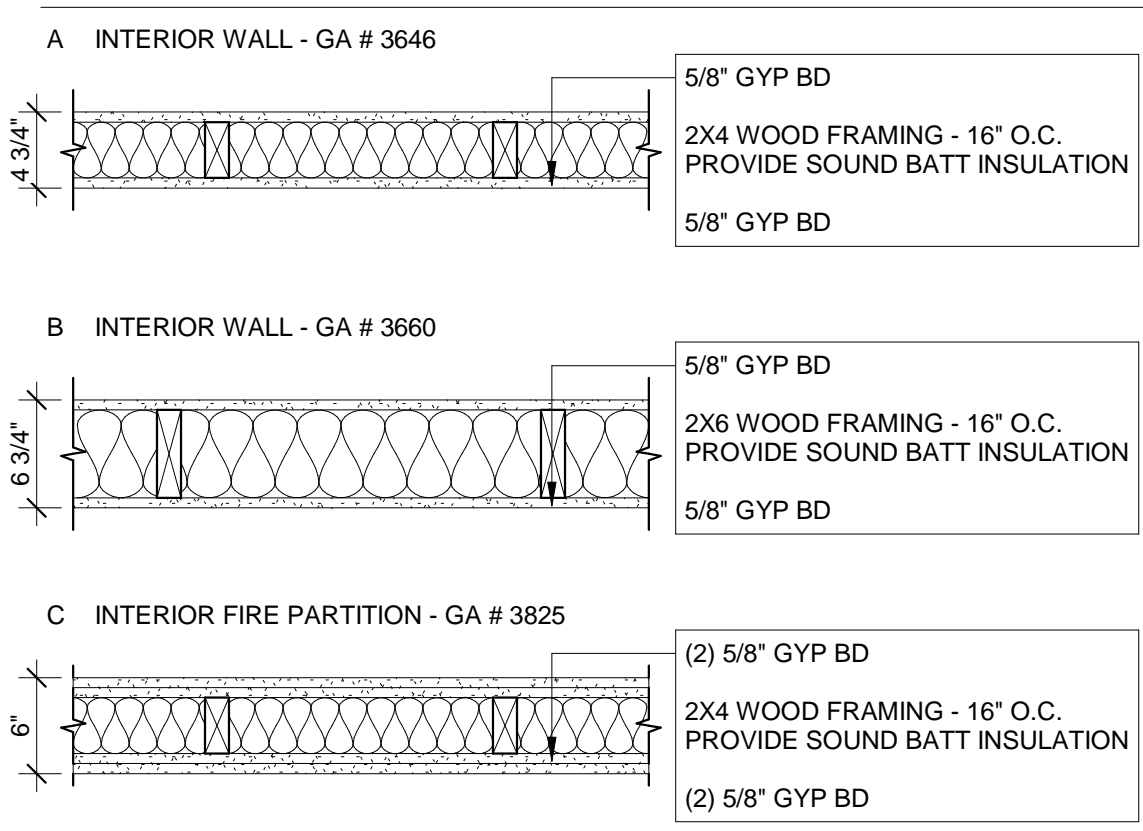
2 DOOR HEAD
1 1/2" = 1'-0"



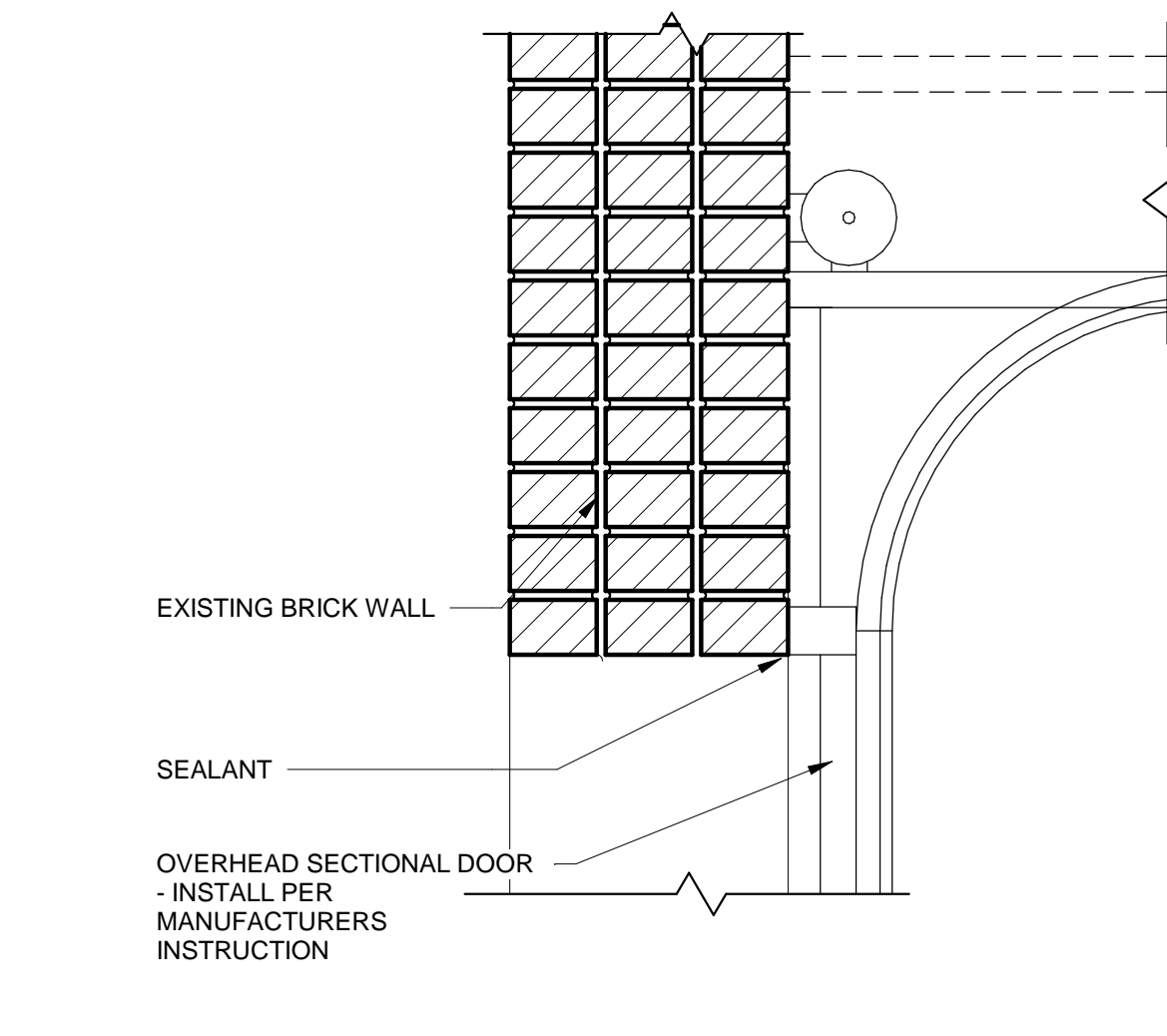
3 THRESHOLD 4
1 1/2" = 1'-0"

- ### PLAN LEGEND
- WALL TYPE (SEE SHEET A101)
 - ROOM NUMBER
 - WINDOW TYPE (SEE WINDOW LEDGED)
 - PLAN NOTE
 - DETAIL OR SECTION NUMBER
 - SHEET WHERE DRAWN
 - DOOR NUMBER (SEE DOOR SCHEDULE AND DETAILS)
 - DIMENSION TO FACE OF STUD (FEF = FACE OF EXISTING FINISH)

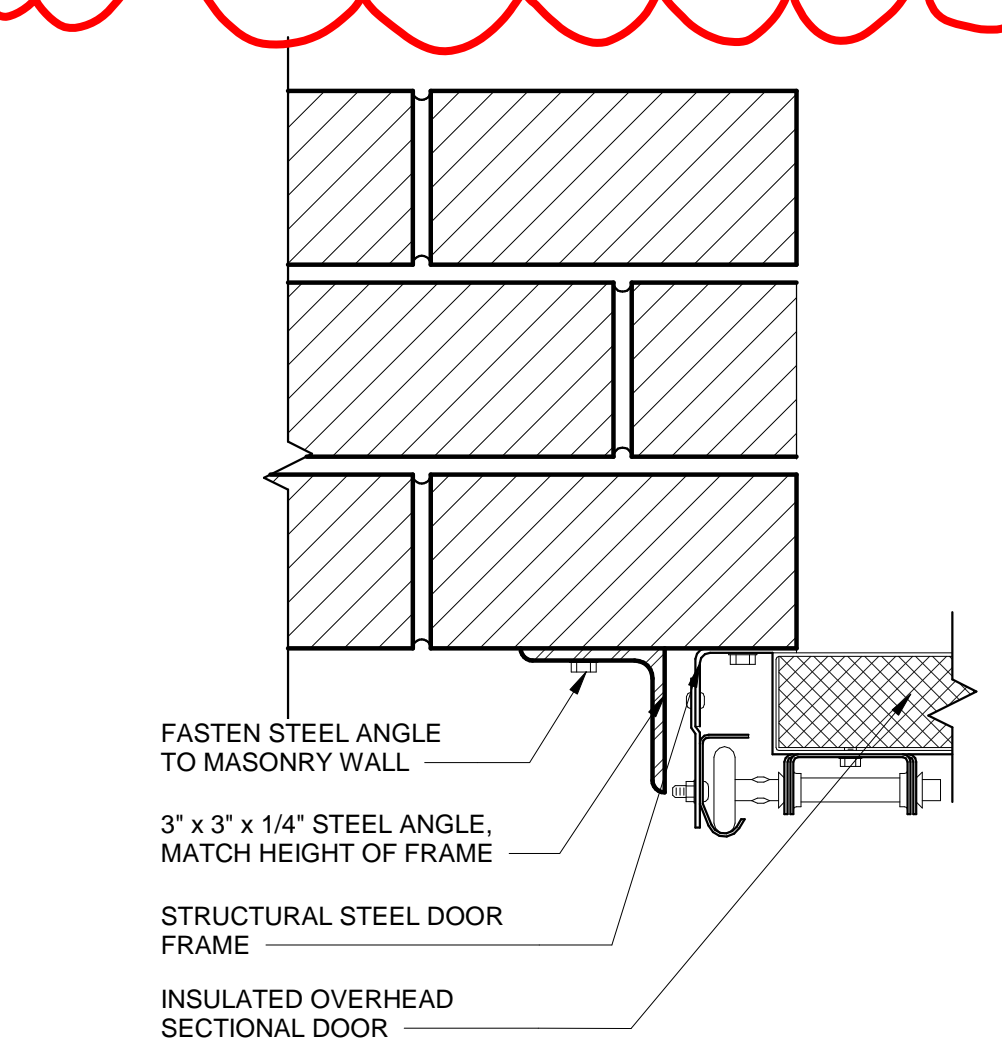
- ### WALL TYPE LEGEND
- SCALE: 1" = 1'-0"
- GENERAL WALL TYPE NOTES:
- PROVIDE BLOCKING AS REQUIRED TO SECURE WALL HUNG COMPONENTS.
 - EXTEND ALL COMPONENTS TO UNDERSIDE OF DECK, UNLESS NOTED OTHERWISE.
 - ALL GYP WALLS TO RECEIVE LEVEL 4 FINISH.
 - PROVIDE SOUND BATT IN ALL WALL UNLESS NOTED OTHERWISE.
 - PROVIDE FIRE CAULK IN ALL PENETRATION IN RATED WALLS. SEE CODE PLAN.
 - FALLS TO BE CONSTRUCTED TO GYPSUM ASSOCIATION STANDARDS SEE GA FILE NUMBERS FOR FURTHER WALL INFORMATION - WWW.GYPSUM.ORG
- KEYNOTES:
- PROVIDE "GREEN" GYP BOARD IN WET LOCATION.



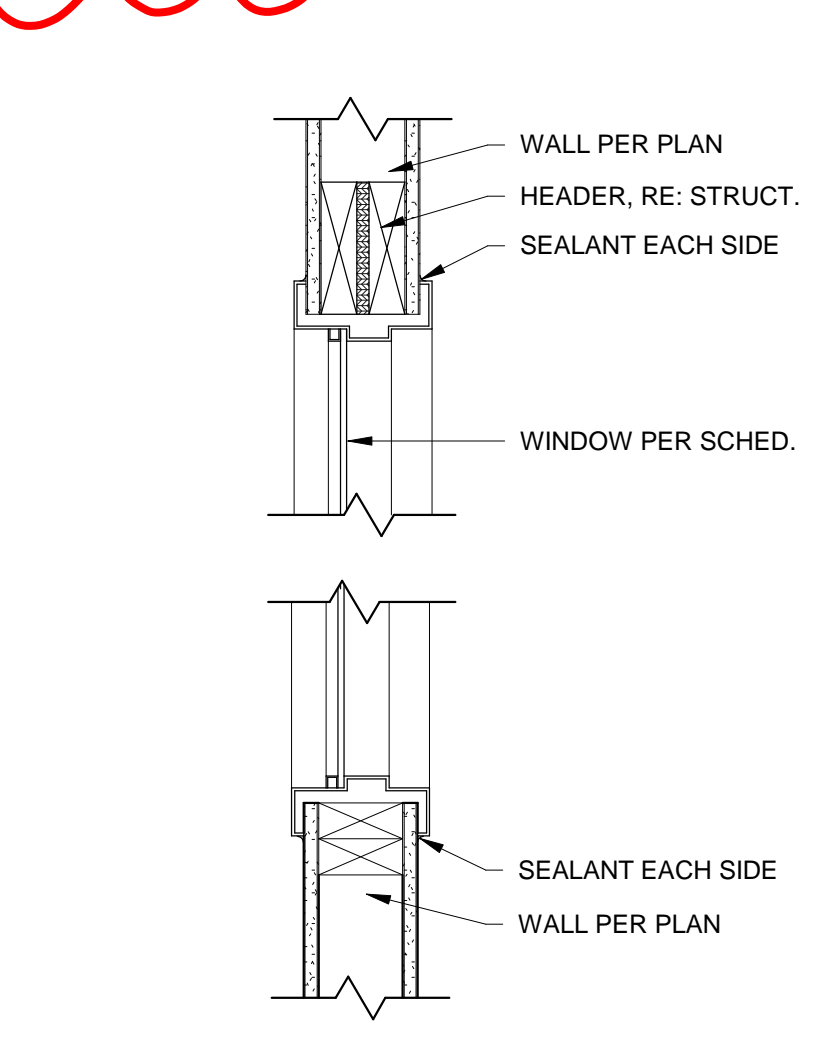
- ### GENERAL NOTES
- ALL WORK UNDER THIS CONTRACT SHALL COMPLY WITH THE PROVISIONS OF THE DRAWINGS AND SHALL SATISFY ALL APPLICABLE CODES, ORDINANCES AND REGULATIONS OF ALL GOVERNING BODIES INVOLVED. ALL PERMITS AND LICENSES NECESSARY FOR THE PROPER EXECUTION OF THE WORK SHALL BE SECURED AND PAID FOR BY THE CONTRACTORS INVOLVED.
 - OWNER TO COORDINATE MECHANICAL, ELECTRICAL AND PLUMBING WITH ARCHITECTURAL DRAWINGS.
 - CONTRACTOR TO VERIFY ALL DIMENSIONS & JOB SITE CONDITIONS. ALERT ARCHITECT WITH ANY DEVIATIONS FROM PLANS.
 - CONTRACTOR TO PROVIDE BLOCKING WHERE APPLICABLE, SUCH AS FOR EQUIPMENT AS WELL AS FIXTURES.
 - ALL DIMENSIONS TO FACE OF FRAMING, GRID LINES, OR CENTER LINES.
 - DO NOT SCALE FROM THESE DRAWINGS.
 - FINISHES AND PAINT COLORS TO BE SELECTED BY OWNER.
 - FURNITURE SHOWN FOR REFERENCE ONLY - NOT IN CONTRACT (NIC)
 - INSTALL BATHROOM FIXTURES AND
 - CONSTRUCTION SHALL BE PERFORMED IN A MANNER THAT WILL NOT DAMAGE ANY EXISTING SURFACES TO REMAIN. DAMAGED SURFACES SHALL BE PROMPTLY REPAIRED IF ANY DAMAGE OCCURS AT NO ADDITIONAL COST TO THE OWNER.
 - REMOVE DEBRIS FROM SITE PROMPTLY AND DISPOSE OF LEGALLY. THE BUILDING AND GROUNDS SHALL BE KEPT CLEAN AND FREE OF REFUSE AT ALL TIMES.
 - PATCH FLOORS, WALLS, SOFFITS AND CEILINGS AS NECESSARY TO PROVIDE A SUITABLE SUB-SURFACE READY TO RECEIVE FINAL FINISHES.



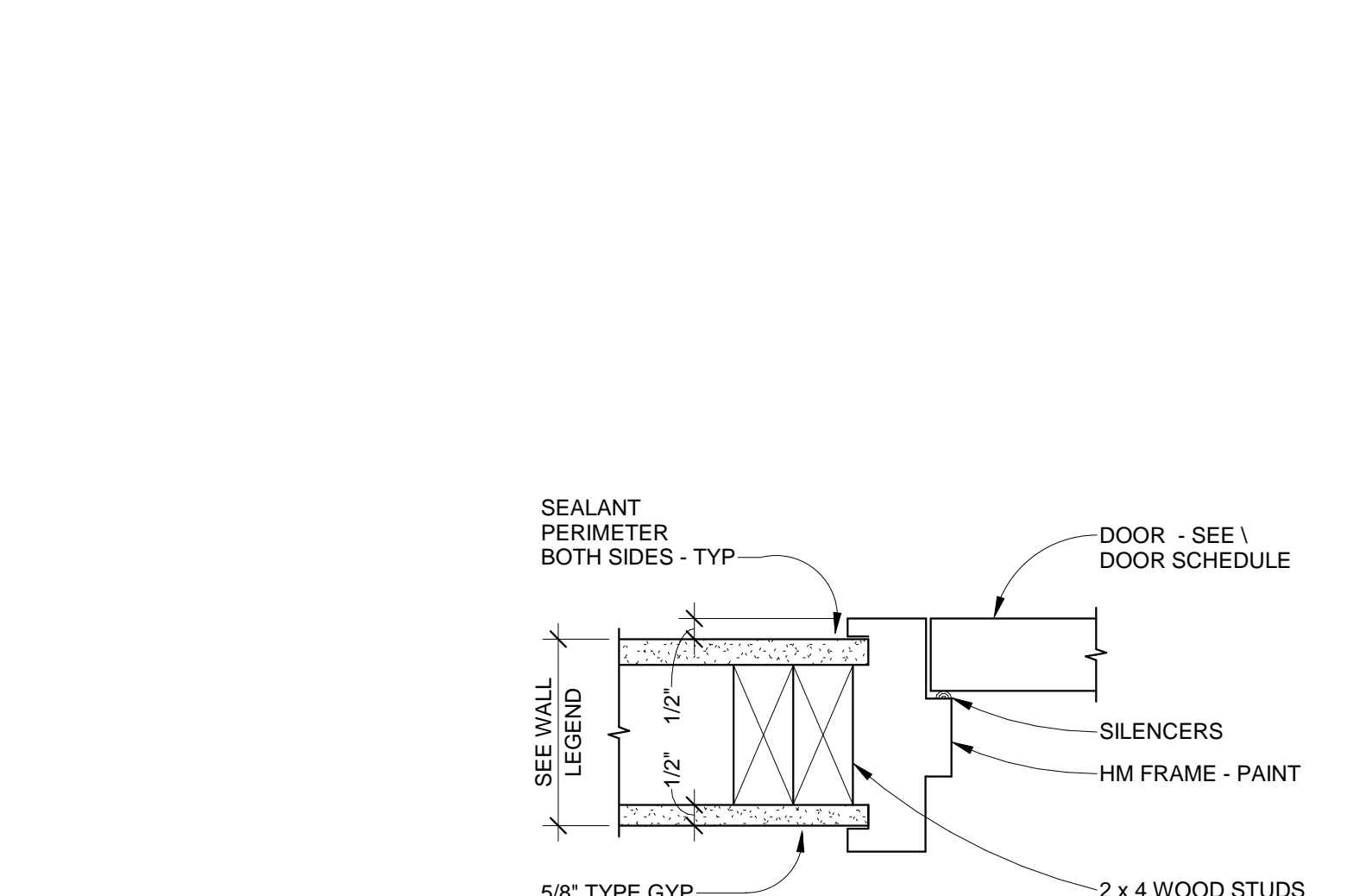
4 EXTERIOR OVERHEAD DOOR HEAD
1 1/2" = 1'-0"



5 OH SECTIONAL DOOR JAMB
3" = 1'-0"



6 INT. WINDOW HEAD (JAMB SIM.) & SILL
1 1/2" = 1'-0"



7 INT. DOOR HEAD / JAMB
3" = 1'-0"

- ### SHEET NOTES
- WATER CLOSET - PER PLUMBING
 - URINAL - PER PLUMBING
 - WALL HUNG LAVATORY - PER PLUMBING - PROVIDE ADA UNDER LAVATORY GUARD UNDER SINK
 - MOP SINK AND FAUCET - PER PLUMBING
 - SINGLE COMPARTMENT FOOD PREP SINK - PER PLUMBING
 - HAND WASH SINK - PER PLUMBING
 - 3 COMPARTMENT SINK - 24"x24" W x 14" D
 - FLOOR SINK - PER PLUMBING
 - RECESSED COMBINATION TOWEL DISPENSER / WAIST RECEPTACLE
 - WALL MOUNTED PAPER TOWEL DISPENSER
 - (3) ADA GRAB BARS
 - MIRROR ABOVE SINK
 - DOUBLE TOILET PAPER DISPENSER
 - SOAP DISPENSER
 - SHELVING - PER OWNER
 - COUNTER / BAR AND CASEWORK - PER OWNER
 - NEW SEMI RECESSED FIRE EXTINGUISHER CABINET AND EXTINGUISHER - LARSENS ARCH SERIES FE CABINET MODEL #2409-6R STEEL, CLEAR TEMPERED SAFETY GLASS, BLACK VERTICAL LETTERING, SEMI-RECESSED CABINET WITH ROLLED EDGE FULL PANEL WITH LARSENS LOCK. - LARSENS FIRE EXTINGUISHER MODEL #MP-10 MP5-A 5LB NOMINAL CAPACITY & BRACKET 16591, OR EQUAL
 - OWNER PROVIDED DISTILLERY EQUIPMENT. COORDINATE UTILITY CONNECTIONS WITH PLUMBING AND ELECTRICAL PLANS.
 - PROVIDE ADDITIONAL LAYER OF (2) LAYERS OF 5/8" GYP BD OVER EXISTING FINISH. MODIFY ELECTRICAL RECEPTACLES AS NECESSARY TO ALIGN WITH NEW FINISH.
 - INFILL EXISTING WALL. ALIGN AND MATCH EXISTING ADJACENT FINISHES.
 - OWNER PROVIDE CONTRACTOR INSTALLED WINDOWS
 - PROVIDE LONG TERM BIKE STORAGE - 1 BIKE HOOK PER EVERY 5 EMPLOYEES

DOOR, FRAME AND HARDWARE SCHEDULE

DOOR NUMBER	ROOM NUMBER	ROOM NAME	DOOR			FRAME		FIRE RATING	HARDWARE GROUP
			W	H	T	MTL	NOTES		
101-1	101	PUBLIC RR	3'-0"	6'-8"	1 3/4"	HM			2
102-1	102	EMPLOYEE RR	3'-0"	6'-8"	1 3/4"	HM			2
103-1	103	OFFICE	3'-0"	6'-8"	1 3/4"	HM			3
105-1	105	STORAGE	3'-0"	6'-8"	1 3/4"	HM			4
105-2	105	STORAGE	6'-0"	8'-0"	1 3/4"	HM			1
105-3	105	STORAGE	6'-0"	8'-0"	1 1/2"	AL			5
106-1	106	DISTILLERY	3'-0"	6'-8"	1 3/4"	WD	T	1	HM

DOOR AND FRAME NOTES:
1. OWNER PROVIDED WOOD FULL LITE DOOR. REFURBISH AS NECESSARY

DOOR AND FRAME ABBREVIATIONS:
HM HOLLOW METAL
AL ALUMINUM
T TEMPERED GLASS

DOOR HARDWEAR GROUPS

HW 1 @ DOUBLE DOOR	DESCRIPTION	CATALOG NUMBER	FIN	MFR
2 SET	HINGE	5BB1 (WT, QTY, SIZE AS REQ'D)	612	IVE
1 EA	FIRE EXIT HARDWARE	F-25-V-EO-LBR	612	FAL
1 EA	FIRE EXIT HARDWARE	F-25-V-L-LBR-DANE	612	FAL
1 EA	MORTISE CYLINDER	985	612	FAL
2 EA	SURFACE CLOSER	SC71 SS	612	FAL
2 EA	KICK PLATE	8400 10" X 1" LDW B-CS	612	IVE
1 EA	CASKETING	488-BK @ HEAD & JAMBS	S-BK	ZER
1 EA	ASTRAGAL	328AA	AA	ZER

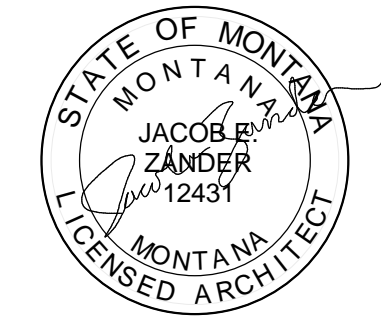
HW 3 @ OFFICE & DISTILLERY	DESCRIPTION	CATALOG NUMBER	FIN	MFR
3 SET	HW HINGE	5BB1HW 4.5 X 4.5	612	IVE3
1 EA	ENTRY LOCK	T501P DANE	612	FAL
1 EA	DOOR STOP	FS436/WS407CCV AS REQ'D	612	IVE
3 EA	SILENCER	SR64	GY	IVE

HW 4 @ ENTRY	DESCRIPTION	CATALOG NUMBER	FIN	MFR
3 SET	HW HINGE	5BB1HW 4.5 X 4.5	612	IVE3
1 EA	ENTRY LOCK	T501P DANE	612	FAL
1 EA	SURFACE CLOSER	SC71 RW/PA	612	FAL
1 EA	KICK PLATE	8400 10" X 2" LDW B-CS	612	IVE
1 EA	CASKETING	429A	A	ZER
1 EA	DOOR SWEEP	8198AA	AA	ZER
1 EA	THRESHOLD	655A-MSLA-10	A	ZER

HW 5 @ OVERHEAD DOOR	DESCRIPTION	CATALOG NUMBER	FIN	MFR
1 EA	OVERHEAD DOOR CO. SECTION STEEL DOOR MODEL 593			
1 EA	MANUFACTURER RECOMMENDED TRACKS			

- OPTIONS:
CHAIN-HOIST
POST-TENSION DRUMS
FLEXIBLE JAMB, HEADER SEAL
INSULATED / TEMPERED GLASS
COLOR BY OWNER

MISSOULA MONTANA
TENENT IMPROVMENT REMODEL
BRYCE YOUNG DISTILLERY



© 2017 | ALL RIGHTS RESERVED

100% CONSTRUCTION DOCUMENTS

8.30.2017
DRAWN BY | OHARREN
CHECKED BY | ZANDER
REVISIONS
1 10.4.2017 PLAN REVIEW COMMENT
2 10.31.2017 ASI 01 | Dimension Modifications

FLOOR PLAN & DETAILS

A101